



Covid Update

I am sure you are all aware that this has been an incredibly challenging week for Turing House School. Once again, I would like to reach out to say thank you to all the emails of support we have been receiving. As you can imagine, Father's Day for some of us was not how we had imagined it panning out, but I am pleased to say that the work of key members of THS staff enabled us to get messages out as quickly as humanly possible to try and stem the spread of the virus.

Advice from Public Health England was incredibly supportive and acknowledged that we were doing everything we could to keep people safe. They did ask me to encourage you all to make your twice-weekly lateral flows tests a high priority.

In the week commencing 24th May, the school managed a little under 300 lateral flow tests in a week, compared to nearly 600 tests in the week commencing 14th June, with a clear spike once we had positive cases. It is vitally important that we keep the high levels of testing up going forward and be proactive rather than reactive as a school community. PHE also wanted me to ensure that during hay fever season, families do not mistake covid symptoms for hay fever. Thank you in advance for

your support on this matter, and please ensure you continue to register your children's test results.

Jack Petchey Awards

We are delighted to announce the following students have been selected to win Jack Petchey Awards this term.

Siana (Year 10)



Siana is a wonderful student and full of personality. She is very kind and considerate, and can also be great fun. Siana is an incredibly hard-working student who always takes noticeable responsibility for her own learning. She is always seeking ways to improve her work and her knowledge, putting in extra effort to make sure this happens. Siana is also exceptionally polite and friendly to fellow students and members of staff, always entering the room with a greeting and a smile.

Siana is very conscientious and the kind student that quickly grasps new scientific topics. She has a strong work ethic and is always willing to help others. Her

Dates for your Diary

- INSET day – 5th July 2021 (all year groups)
- Incoming Year 7 – Induction day – Hampton site - 5th July 2021
- Immunisations – Year 8 – HPV – 13th July
- Last day of term – 16th July

Helpful Reminders

[E-Safety](#)

[Relationships and Sex Education](#)

[Careers](#)

good-natured and helpful disposition has been an asset to the class. She enjoys science and has approached all lessons with interest and enthusiasm. Siana contributed to the English options evening which demonstrates her dedication to school and willingness to help others. In drama lessons, she works diligently to achieve outstanding results and support fellow students. She is self-motivated and determined to succeed. Siana is a creative theatre maker and talented performer. She took on a lead role in the school show and supported in rehearsals by leading groups of younger students and modelling and promoting excellent rehearsal behaviour and attitude - a perfect role model!

She is an enthusiastic student who is always willing to become involved in extra-curricular activities and generally give of her time. Her exuberance is infectious, and others feed off this which ensures that everything she does is exciting and positive. She is a charismatic member of the tutor group who is always eager to share ideas during discussions and debates and conveys her thoughts eloquently. Her attitude and conduct are consistently outstanding. Well done, Siana!

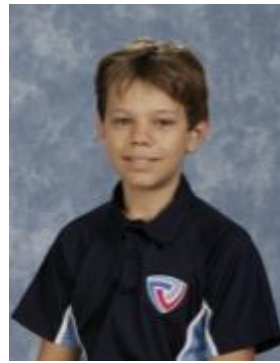
Lola (Year 9)



Lola is a brilliant student who is a real pleasure to teach and work with. She is an enthusiastic learner and a lovely, kind person. Lola always takes an interest in everything and shows a great curiosity in all of her subjects. Her class teachers say that she is an enthusiastic, thoughtful, hardworking student, who shows a high level of maturity; she is a leader - always well organised and welcoming. She has a smile ready at all times for staff and peers alike and is very considerate of people's thoughts and feelings. Lola is a very reliable contributor to lessons, often with a new perspective on what is being discussed. She is confident to make connections with what she has learned. She listens actively in class and responds positively to feedback, and is therefore making great progress. When we recently asked for volunteers to

support younger students who need help and friendship, Lola was the first in the queue to write down her name – and was following up with her teachers to see if we had heard anything back yet! Lola is such a valued member of the school; this award is well-deserved, and Lola should be proud to achieve it.

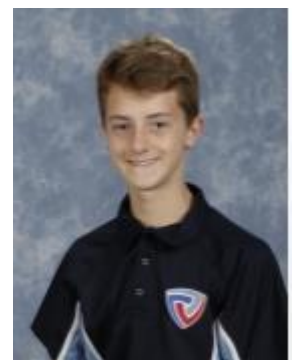
Arne (Year 8)



Arne is a positive, happy and outgoing student. He is willing to offer fantastic contributions in class, and is always polite, thoughtful, and considerate of others. Arne is also an incredibly kind student, and he supports his peers both inside and outside of the classroom. He has become a role model for the year group, and someone that his friends can rely on to be supportive. Arne articulates his ideas in an intelligent and mature way, and his attitude to learning has been highlighted as a strength. Arne is an excellent sportsman who has shown a dedication to improving his abilities. He constantly applies and transfers skills across a range of sports, enabling him to pick up sports quickly. Arne works well within groups and has shown aspects of being a great coach. Arne is a talented performer who comes up with creative ideas and often takes on a director role in his group in Drama lessons. He has natural comedic timing and makes us all laugh. Arne took part in the school show last year and was committed to rehearsals, showing great levels of maturity and commitment. A fantastic recipient for the Jack Petchey Award.

Larry (Year 8)

Larry is an engaged, motivated and enthusiastic student. Larry's love for learning and his dedication to his homework completion have a proven track record of excellence. Larry is a polite and humorous young man with a natural curiosity for life. He always poses



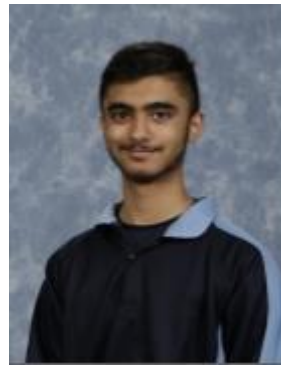
interesting questions and is ready for a debate at a moment's notice. He has an excellent work ethic and shows an enjoyment of life. Larry is a talented performer who comes up with creative ideas and often takes on a leading role in his group in Drama lessons. Larry took part in the school show last year and was committed to rehearsals. Larry also comes up with unique and interesting ideas, especially in Science, around the use of jars for bottling and transporting energy. He can always bring humour appropriately into discussions and makes excellent plans on how to accomplish any task scientifically.

Molly (Year 7)



Molly is a very conscientious and kind student who always tries her best at everything she does and displays an empathy beyond her years for those who find themselves in an unhappy place. She has a lovely sense of humour and is usually to be found with a smile on her face. Always keen to take part in new challenges like the 'Million Word' Challenge, she puts 100% effort into her work in every lesson. Her attention to detail and creative ability in Design and Technology is of a very high standard and her motivation for learning is evident and reflected in her assessment results and progression in Maths. She is incredibly supportive towards her classmates and is a wonderful role model for her peers in all year groups. She has been extremely supportive welcoming a new student in her year group, teaching her English and showing them around the school, showing patience and her good-hearted nature. An asset to Turing House School, a student that we are very lucky to have, and a deserving recipient of a Jack Petchey Award.

Taran (Year 9)



Taran is an outstanding student. As soon as you meet him, you realise what a kind and polite person he is. Taran is incredibly conscientious and works very hard on homework and school work alike. He is very willing to contribute to lessons and does so with a great mixture of confidence and modesty, and his contributions show that he is really thinking about the work, extending himself and making connections. Due to his diligence, he has made great progress in all subjects this year. A few weeks ago, Taran's class were asked if there would be anyone who would like to mentor a younger student to help inspire them and help them with their struggles. We were not at all surprised when Taran willingly added his name to this list. Taran is caring and encouraging, and will regularly be seen motivating other students to do their best in lesson. He sets very high standards for himself but is never pushy or full of himself, rather he is a considerate and fun student who we can see is popular among his peers. This award is a thoroughly deserved recognition of Taran being an exemplary Turing House student.

Turing House Friends - date for your diaries!

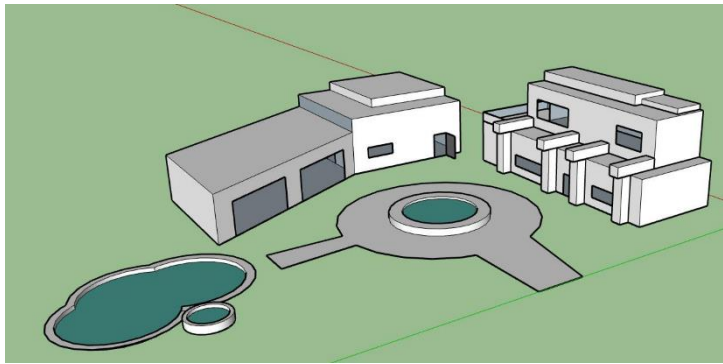
Please come along and join us at our next meeting on **Thursday 1st July at 5.30pm**, to help us plan our end of term fund raising. Bring your ideas - we would like to meet you. Details for joining the Zoom meeting are on the flier accompanying the newsletter this week.

Musical Success

Huge congratulations to Romy, 7R, who has passed her Grade 5 Flute exam. Well done, Romy!

Young Engineers

Year 8 have been making good use of their time while remote learning in Design and Technology this week by having a go at the 3D designing programme, Sketchup. Yusuf H took these skills a step further and create this amazing architectural design using this programme:



Staffing Update

We are delighted to welcome back Ms Harman and Mrs Skinnard from maternity leave next week. For new students (and those who may have simply forgotten), Ms Harman is our Head of Languages and Mrs Skinnard is Assistant Headteacher and teacher of science. It will be great to have them back.

Three new members of staff will be joining us next week as well: Mr Tse Laurence in Geography, Ms Pownall in Maths and Ms Loudain in Science. Please make them feel welcome to the Turing House Family.

Next week, we also say a fond farewell to Ms Hughes and Ms Schaffner who are moving onto other ventures. We would like to thank them for their huge contribution to Turing House in this most challenging of years.

Birds of a Feather

Well done to Toby (8U) for using his creative skills during our home learning in art this week. This may have been created using limited resources, but it looks fantastic!



Thank a Teacher (school worker!)



What is Thank A Teacher Day? (bit late but still worth it!)

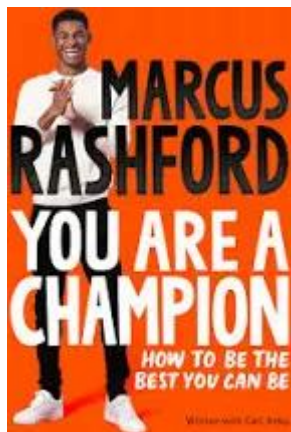
Every year on National Thank A Teacher Day we celebrate schools, colleges, teachers and support staff across the country. Anyone can send a card, to any member of staff working in UK schools and colleges; school leaders, teachers, teaching assistants, and all support staff such as lunchtime supervisors, caretakers and cleaners. You can even send your card to the whole school/college.

Thank A Teacher is open all year round, but for the lead up to National Thank a Teacher Day on the 23rd June you'll have access to a limited edition e-card designed by Gruffalo illustrator, Axel Scheffler.

Michael Morpurgo, celebrated author and former Children's Laureate, and President of the Teaching Awards Trust, said:

"So often and for so many of us, it is a teacher who changed our lives, was at our side through hard and difficult times, who lifted us up when we were down, helped us find our voice, gave us confidence when we needed it most, set us on a path that we have followed ever since. At my school I had a French teacher, who might not have made a linguist of me, but was always kind to me. He loved his subject and passed that on. I still love French, the language, the people, the literature, but even he could not persuade me to learn my French grammar."

Book of the Week



Marcus Rashford MBE is famous worldwide for his skills both on and off the pitch – but before he was a Manchester United and England footballer, and long before he started his inspiring campaign to end child food poverty, he was just an average kid from Wythenshawe, South Manchester.

Written with journalist Carl Anka, 'You Are a Champion' is packed full of stories from Marcus' own life, brilliant advice and top-tips from performance psychologist Katie Warriner. It will show you how to be the very BEST that you can be.

It shows you how to:

- Be comfortable with who you are – you can't be a champion until you're happy being you!
- Dream big
- Practise like a champion
- Get out of your comfort zone and learn from your mistakes
- Navigate adversity in a positive way
- Find your team
- Use your voice and stand up for others
- Never stop learning

Sporting Headline of the Week

New Zealand's Laurel Hubbard has become the first ever transgender athlete picked to compete at an Olympics. Officials have selected her for the women's weightlifting team for Tokyo 2020, after qualifying requirements were recently modified. She had competed in men's events before coming out as transgender in 2013. Critics say Hubbard has an unfair advantage, but others have argued for more inclusion at the Games.

Sporting Fact of the Week

Did you know.....?

Before 1986, the tennis balls used at Wimbledon were not yellow. The colour was added to allow people to see the ball better while in play.

Le Tour



The 2021 Tour de France will be the 108th edition of the Tour de France, one of cycling's three grand tours. Originally planned for the Danish capital of Copenhagen, the start of the 2021 Tour (known as the Grand Départ) was transferred to Breton due to the impact of the COVID-19 pandemic, with Copenhagen hosting four matches in the UEFA Euro 2020 and that event also being rescheduled to 2021 due to the pandemic. Originally scheduled for the 2nd to 25th July 2021, the Tour was moved to 26th June to 18th July 2021 to avoid the rescheduled 2020 Summer Olympics. This would have been the first occasion on which the Tour de France had visited Denmark. Denmark will now host the Grand Départ in 2022. The race covers a distance of 3,383 kilometres (2,102 miles), and will see its longest stage since the 2000 Tour de France, with 248 kilometres (154 miles) on stage seven.

Euro 2020 Update

The delayed 2020 European Football Championships continues to provide us with some much-needed

sporting excitement and entertainment. England have made it through to the next round of the competition and will play Germany in their next match! Remember to have a look at the wall chart in school to see the latest results and scores.



The Alan Turing £50 banknote

The Alan Turing £50 banknote has begun to enter circulation - as a giant artwork of the wartime hero has been installed at the heart of GCHQ.

The new polymer Bank of England note depicting the famed mathematician, who is often considered to be the father of computer science, was issued on Wednesday, coinciding with his birthday.

Marking the occasion, a 10-metre by 10-metre rainbow canvas inspired by the LGBT Pride flag has been unveiled at the centre of the GCHQ hub in Benhall, Gloucestershire - known as the doughnut.

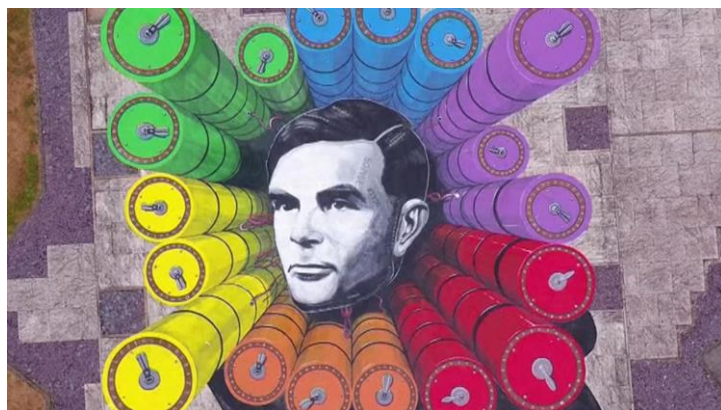
Mr Turing played a pivotal role in cracking the Enigma code during his time at Bletchley Park in Buckinghamshire - GCHQ's wartime home - which is thought to have shortened the Second World War by at least two years, saving millions of lives.

Used by the German armed forces to send messages securely, the Enigma enciphering machine was believed to be unbreakable, but the first wartime messages were cracked in 1940.

The artwork, created by 3D artist Joe Hill in collaboration with GCHQ's Pride network, features Mr Turing inside the wheels of the British Bombe - the

machine he designed to crack the Enigma code - and lies flat facing the sky.

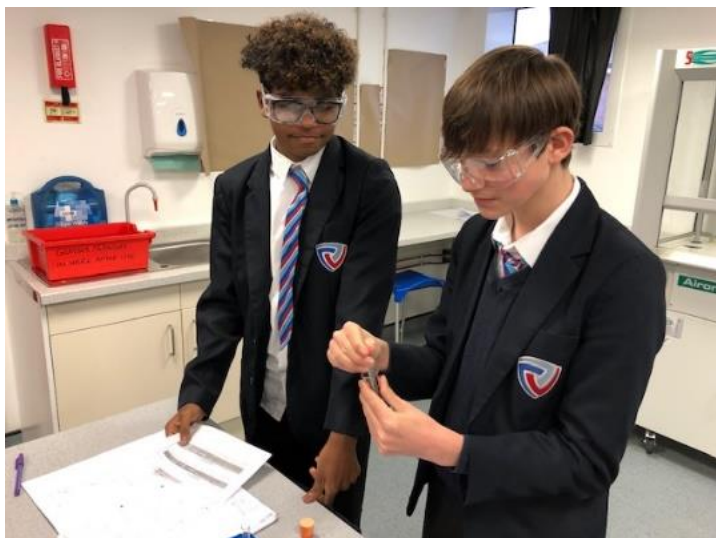
It also contains 15 hidden codes for viewers to decipher, and will later be donated to organisations chosen by GCHQ's Pride Network.



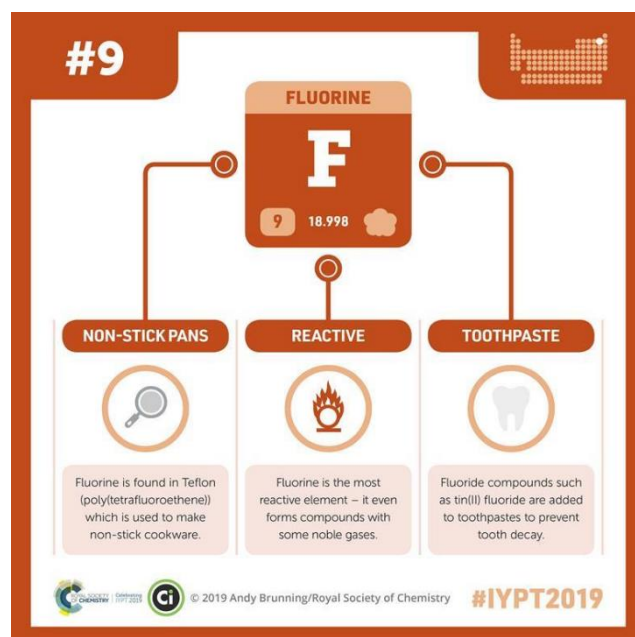
Previously in chemistry



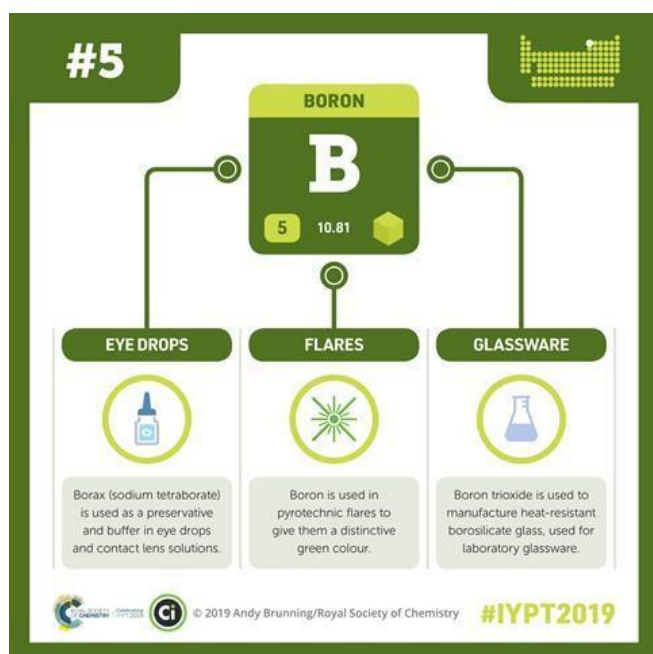
No chemistry practicals occurred last week but I am sure students are eager to get back in class and practice their skills in chemistry. Here's a throwback snapshot from an investigation into the energetics (exo-endothermic) of chemical reactions, that Year 10s did back in December!



1808. Boron (B) is named after one of its compounds, borax, which had been used as a glazing agent for hundreds of years. Boron can be found in eye drops, mild antiseptics, washing powders and tile glazes. Boric oxide is also commonly used in the manufacture of borosilicate glass (Pyrex). It makes the glass tough and heat resistant. Boron is essential for the cell walls of plants. It is not considered poisonous to animals, but in higher doses it can upset the body's metabolism. We take in about 2 milligrams of boron each day from our food, and about 60 grams in a lifetime. Some boron compounds are being studied as a possible treatment for brain tumours. Interested to know more? Listen to this podcast: [Boron an element known for split personalities, parachute molecules, and swapping partners](#)



On this week on Chemistry



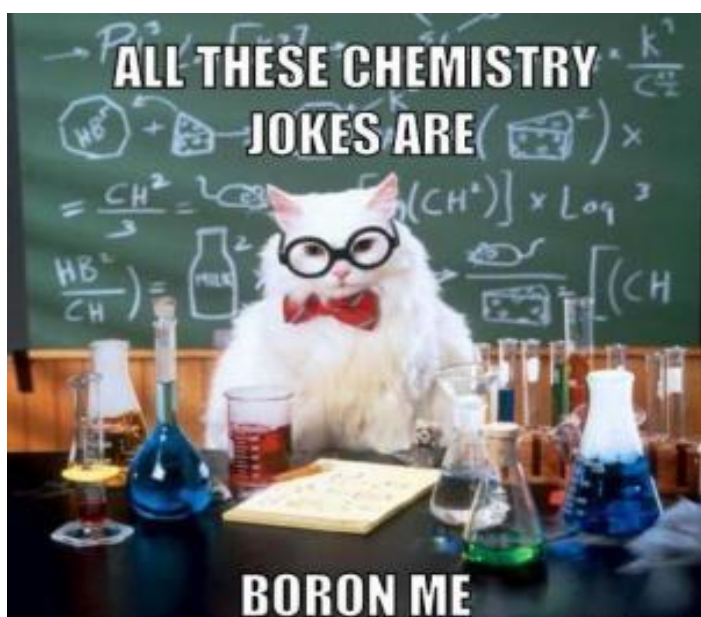
June 21st - On This Day: Joseph Louis Gay-Lussac and Louis Thenard isolated the element boron on this day in

June 26th - On This Day: Fluorine was isolated by the French chemist Henri Moissan on this day in 1886. The existence of fluorine (F) was well known, but for years scientists had failed to isolate it from its compounds, with some even dying in the attempt (called "fluorine martyrs"). There was no commercial production of fluorine until the Second World War, when the development of the atom bomb, and other nuclear energy projects, made it necessary to produce large quantities. Before this, fluorine salts, known as fluorides, were for a long time used in welding and for frosting glass. Fluorine is used in many fluorochemicals,

including high-temperature plastics, such as Teflon (poly(tetrafluoroethene), PTFE), which well known for its non-stick properties and is used in frying pans. It is also used for cable insulation, for plumber's tape and as the basis of Gore-Tex® (used in waterproof shoes and clothing).

Fluoride is an essential ion for animals, strengthening teeth and bones. It is added to drinking water in some areas (e.g., Australia, Brazil, Canada, U.S). The presence of fluorides below 2 parts per million in drinking water is believed to prevent dental cavities. However, above this concentration it may cause children's tooth enamel to become mottled. Fluoride is also added to toothpaste. The average human body contains about 3 milligrams of fluoride. Too much fluoride is toxic. Elemental fluorine is highly toxic. Interested to know more? Listen to this podcast: [Fluorine the 'tiger' of Chemistry](#)

This week's chemistry joke



Preparation for KS4 Evening

We were delighted to hold our annual PFKS4 event for around 60 parents in our current Year 8. Parents listened to short presentations from Mr Jacks, Mr Winstanley, Ms Kirwan and Ms Eckersley about Science, Maths and English in Year 9 and were also given further information on the GCSE Short Course RP which commences at the start of Year 9, with the formal external paper taking place at the end of Year 10.

